



Hockey Academy
Parent Information Night

Mike Fiorillo

Hockey Experience:

- 5 years AJHL
- 2 years NCAA
- University of Alberta Golden Bears (class of 2012)
- Fort Saskatchewan Chiefs Sr. AAA

Coaching Experience:

- Bantam AAA St. Albert Sabres 2013
- Midget AAA St. Albert Raiders 2014
- KC Midget Minor AAA 2016-2018
- Team Brick 2017-Present
- KC Midget Major AAA 2018-2019

Academy Experience:

- 7 years On-Ice Instructor
St. Edmund Hockey Academy
- 7 years Hockey Academy Coordinator St.
Albert Public Schools Athletic Academy
- 6 years teaching grade 5

Instructors/Staff

Alex Aldred (Group 6/7 and 8/9)

- 7 years with Academy
- 5 years WHL/ 4 years CIS

Debbie Klatt (All groups)

- 8 years with Academy
- 20+ years powerskating instruction

Mat Knoll (Group 6/7 - Lead Teacher)

- 3 years with Academy
- 4 years AJHL/4 years NCAA

Dave Grice

- Equipment Truck Driver

Chelsea Stone (Group 5 off-ice Teacher)

Angus MacDonald (Group 8/9 off Ice Teacher)

Melissa Kueber (Group 4 - Lead Teacher)

- 3 years with Academy
- Colgate University NCAA
- Asst. Coach Midget AAA St. Albert Slash

Kevin Nastiuk(Goalies)

- First year with Academy
- Recently retire from Pro (Europe)
- NHL Draft Pick 2003

Kane Lafranchise (Group 5)

- Recently retired from AHL (NY Islanders)
- Works with NAX

Erhen Menard (Group 6/7)

- Head Coach Midget AAA KC Pats


Daphne Bezovie (LEH - Financial)

Kevin Jones (Admin)

Our Core Value



Philosophy

- Hockey Academy  NHL
- We are here to create good people first, good hockey players second.
- Teach values such as time management, professionalism, etc.
- Teach fundamental skills for on-ice skill development.
- Show students that other sports can/is good for their overall game.
- Teach what it means to be considered a “student-athlete”.

DEDICATION

DESIRE

DIGNITY

Expectations

- No minimum grade required
 - Normal student expectations (homework, assignments, behaviour)

- Academy Discipline Protocol

Website

athleticacademy.spschools.org/hockey

Fees

- All academy fees are collected by the main office of your school.
- Please direct any questions regarding payments to the office as the secretaries are the best people to help you.
- Payment schedules in your child's orientation package is a reference for your balance each month.

Features of the Academy

- Remind 101 app (Please sign up)
- Extra Clothing Order (Hoping for beginning to mid October)
- On-Ice Testing (Competitive Thread Testing)



SPS Grade 7, 8 and 9 Fall 2018 - Overall Results

Kinex Arena - Septe

F. Name	L. Name	30M Forward (S)	Rank	30M Forward with Puck (S)	Rank	30M Backward (S)	Rank	Weave Agility (S)	Rank	Weave Agility with Puck (S)	Rank	Stop and Start (S)	Rank	Stop and Start w/puck (S)	Rank	Eval Left Transition (S)	Rank	Eval Left Transition w/puck (S)	Rank	Eval Right Transition (S)	Rank	Eval Right Transition w/puck (S)	Rank
		5	13	5.222	15	5.803	6	13.976	20	14.042	12	11.263	13	12.08	13	12.34	11	14.75	19	13.733	19	13.959	11
		5.039	14	5.285	16	7.121	20	13.931	19	15.089	19	11.372	16	11.787	11	18.246	22	15.719	20	14.001	20	15.313	11
		5.088	17	4.931	6	6.256	12	13.651	13	14.234	15	11.265	14	12.106	14	11.937	7	13.002	7	11.702	5	12.462	1
		5.233	19	5.369	17	5.58	4	13.279	10	13.764	9	11.36	15	12.336	15	12.354	12	13.696	12	12.017	8	13.873	14
		4.857	8	5.182	14	6.176	11	13.588	11	14.157	13	11.416	17	12.028	12	11.777	4	13.14	8	12.726	14	12.94	1
		4.932	10	5.053	9	6.272	13	13.757	16	14.008	10	12.297	20	12.514	17	13.102	18	14.06	13	12.431	11	13.609	1
		4.695	5	4.875	4	5.43	1	11.773	1	12.543	3	10.465	4	10.406	2	11.454	1	14.211	15	11.145	2	12.15	1
		4.677	4	4.767	3	5.561	3	11.774	2	12.232	1	9.927	1	10.468	3	11.61	3	12.252	3	11.053	1	11.44	1
		5.282	20	5.421	20	7.349	21	13.911	18	16.869	22	12.82	22	12.992	21	14.665	21	15.757	21	14.172	21	16.131	2
		4.816	7	5.019	8	6.478	16	13.907	17	14.805	18	11.058	10	14.745	22	12.942	16	14.607	18	13.307	17	14.409	1
		5.058	16	5.089	12	6.287	14	13.684	14	14.3	17	10.981	9	12.349	16	13.002	17	14.423	16	12.965	16	13.692	11
		4.964	12	5.083	11	6.042	10	12.416	5	12.976	6	10.614	6	11.175	6	12.29	10	12.184	2	11.875	6	13.069	1
		5.358	21	5.39	18	7.453	22	15.551	21	15.967	21	11.872	19	12.58	18	14.321	20	17.884	22	14.524	22	15.893	21
		4.77	6	4.929	5	6.416	15	13.009	8	13.521	7	11.253	12	11.237	7	12.279	9	13.25	9	12.314	10	14.4	11
		4.486	1	4.444	1	5.437	2	12.281	3	12.242	2	10.25	2	10.721	4	11.97	8	12.359	4	11.188	3	12.111	4
		5.122	18	5.411	19	6.594	17	13.204	9	14.041	11	11.561	18	12.839	19	12.589	14	14.478	17	12.701	13	26.489	21



Goalies - Video Work



Routine

Group 4 LEH

- Bags must be at school by 9am and placed in shed (located in staff parking lot by dumpsters)
- Stick bag is marked with orange tape on handles.
- 10:30am students will get jacket and lunch and head to front of school.
- Hockey bags have been picked up by driver and will meet students at rink.
- Arrive at rink by 10:50am
- 25 minutes to dress. Instructors will help with skates. (difference between tying and tightening)
- On-Ice: 11:15am-12:30pm
- On bus by 12:45pm
- Eat lunch on bus and at school by 1:00pm
- Bags will go in shed upon arrival or gym storage if bus student or parent to pick up later.

It is the responsibility of the student to get their hockey bag from the gym storage and bring it to the shed upon arrival at the school.

Routine cont... (LEH 4)



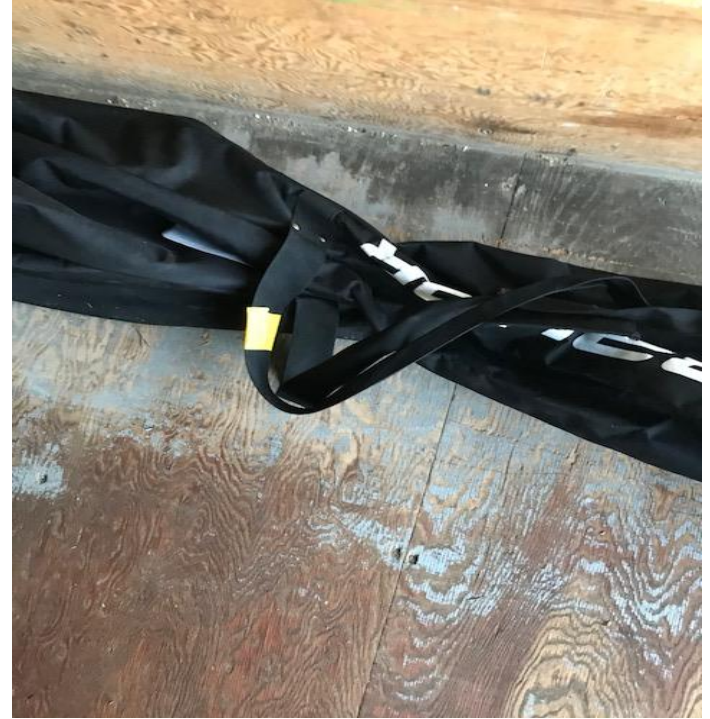
Routine

Group 4 RH

- Bags loaded directly into truck
- Sticks in stick bags with yellow tape on handles
- 10:20am students will meet Coach Debbie in front of school and drive to the rink in bus
- Arrival 10:40am
- 35 minutes to get dressed. Instructors will help with skates
- Ice 11:15-12:30pm
- 12:45pm load bus and drive back to school
- 1:00pm arrival
- Recess until 1:30pm
- Students to remove bags from shed at 3:30pm
- Please take home or place in infirmary for parent pick up later that evening

It is the responsibility of the student to get their hockey bag from the shed and bring it to the infirmary at dismissal.

Routine cont... (RH 4)



Routine

Group 5 LEH

- Bags must be at school by 9am and placed in shed (located in staff parking lot by dumpsters)
- Stick bag is marked with orange tape on handles.
- 10:30am students will get jacket and lunch and head to front of school.
- Hockey bags have been picked up by driver and will meet students at rink.
- Arrive at rink by 10:50am
- 25 minutes to dress. Instructors will help with skates. (difference between tying and tightening)
- On-Ice: 11:15am-12:30pm
- On bus by 12:45pm
- Eat lunch on bus and at school by 1:00pm
- Bags will go in shed upon arrival or gym storage if bus student or parent to pick up later.

It is the responsibility of the student to get their hockey bag from the gym storage and bring it to the shed upon arrival at the school.

Routine cont... (LEH 5)



Routine

Group 5 RH

- Bags loaded directly into truck
- Sticks in stick bags with yellow tape on handles
- 10:20am students will meet Coach Debbie in front of school and drive to the rink in bus
- Arrival 10:40am
- 35 minutes to get dressed. Instructors will help with skates
- Ice 11:15-12:30pm
- 12:45pm load bus and drive back to school
- 1:00pm arrival
- Recess until 1:30pm
- Students to remove bags from shed at 3:30pm
- Please take home or place in infirmary for parent pick up later that evening

It is the responsibility of the student to get their hockey bag from the shed and bring it to the infirmary at dismissal.

Routine cont... (RH 5)



Routine

Group 6/7 LEH 6

- Bags must be at school by 9am and placed in shed (located in staff parking lot by dumpsters)
- Stick bag is marked with blue tape on handles.
- 12:45pm students will get jacket and lunch and head to front of school.
- Hockey bags will be loaded onto academy bus (Monday) or have been picked up by driver and will meet students at rink.(Friday)
- Arrive at rink by 1:15pm
- 30 minutes to dress.
- On-Ice: 1:45-3:00pm (Matthews Group - Akinsdale / Eichel Group - Kinex)
- Pick up at rink 3:00pm or Academy bus will take students back for 3:30pm
- Bags will go home upon arrival or gym storage if bus student or parent to pick up later.

It is the responsibility of the student to get their hockey bag from the gym storage and bring it to the shed upon arrival at the school.

Routine



Routine

Group 6/7 RH 6

- Bags loaded directly into truck
- Sticks in stick bags with blue and yellow tape on handles
- 12:55pm students will meet Coach Debbie/Coach Alex in front of school and drive to the rink in bus
- Arrival 1:15am
- 30 minutes to get dressed. Instructors will help with skates
- Ice 1:45-3:00pm (Matthews Group - Akinsdale / Eichel Group - Kinex)
- Pick up at rink 3:00pm or bus will take students back to school for 3:30pm
- Take bag home or students can keep in infirmary for parent pick up later on in evening

Routine cont... (RH 6)



Routine

Group 6/7 WDC 7

- Bags dropped off in garage at school
- Sticks in stick bag that is in the garage
- 12:50pm students will collect bags from garage and bring them to truck (Monday) or head straight to the bus because bags have been picked up (Fridays)
- Arrive at rink 1:15pm
- 30 minutes to get dressed
- Ice 1:45-3:00pm (Matthews Group - Akinsdale / Eichel Group - Kinex)
- Pick up at rink 3:00pm or bus will take students back to RH for 3:30pm
- Take bag home or students can keep in infirmary for parent pick up later on in evening

Routine cont... (WDC 7)



Routine

Group 7/8/9 WDC 8/9

- Bags dropped off in garage at school
- Sticks in stick bag that is in the garage
- 12:50pm students will head straight to the bus because bags have been picked up
- Bus will head to SGS to pick up 7/8/9's
- Arrive at rink 1:15pm
- 30 minutes to get dressed
- Ice 1:45-3:00pm
- Pick up at rink 3:00pm

Routine cont... (WDC 8/9)



Routine

Group 7/8/9 SGS 7/8/9

- Bags dropped off in front foyer of school
- Sticks in stick bag that is in the foyer
- 1:00pm students will head straight to the bus because bags have been picked up
- Arrive at rink 1:15pm
- 30 minutes to get dressed
- Ice 1:45-3:00pm
- Pick up at rink 3:00pm

Bag Tags

Please make sure your child has tag on their bag.

Red - Group 4

Blue - Group 5

Grey - Group 6/7

Green - Group 7/8/9

Stick Tag

We have purchased sticker for the student-athlete stick that has last name and it is the color of their group.

We have 2 for every student.

Bus / Parent Pick Up students

